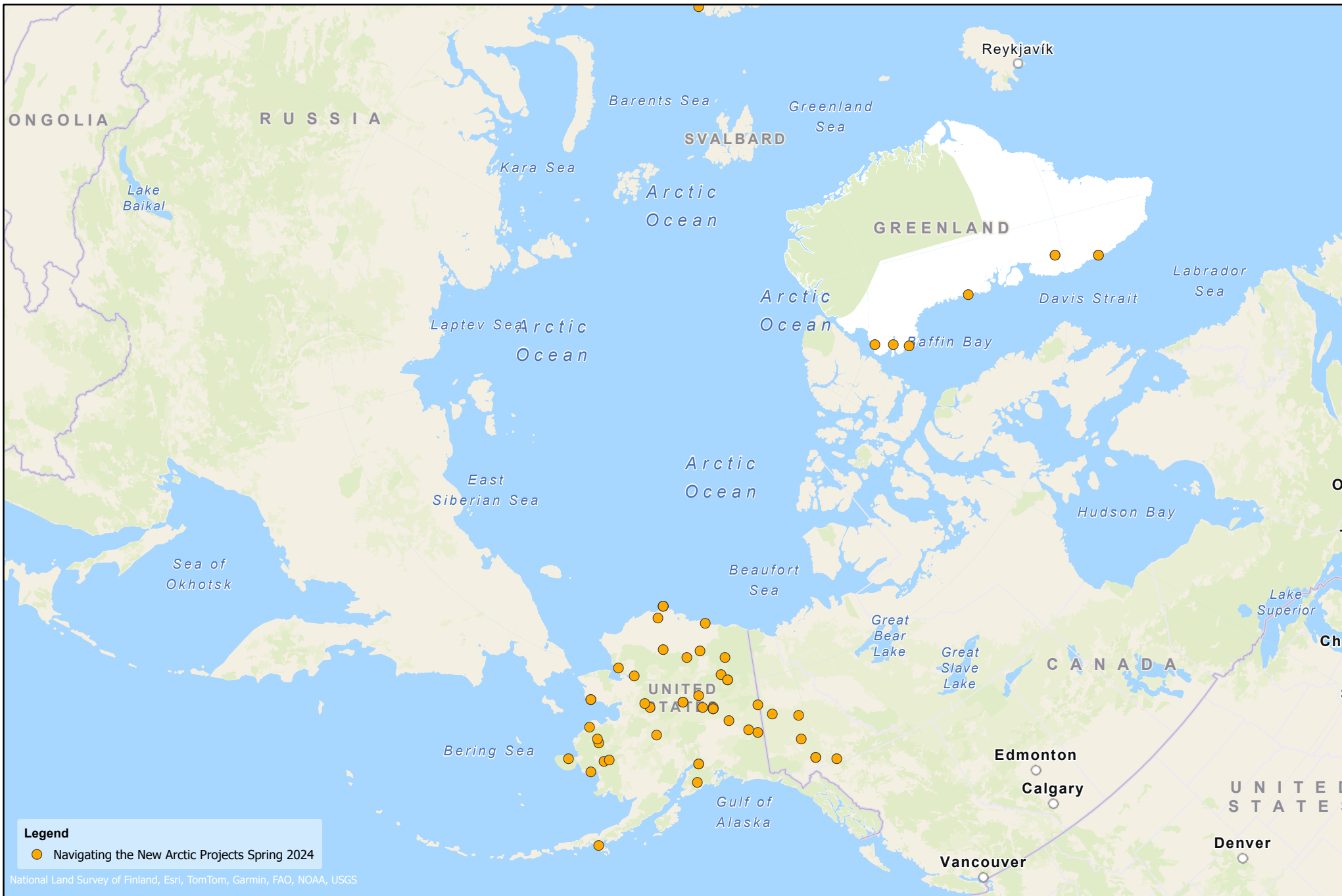


# Navigating the New Arctic Projects Summer 2024



0 400 800 1,600 Miles

0 500 1,000 2,000 Kilometers



**BATTELLE**  
Arctic Research Operations



April 2024

# Active NSF Supported Projects

Place	Principal Investigator	Email	Project Title	Award #
Akiak	Shiklomanov, Alexander	alex.shiklomanov@unh.edu	NNA Research: Collaborative Research: Socio-Ecological Systems Transformation in River basins of the sub-Arctic under climate change (SESTRA)	2318380
Alakanuk	Lamb, Michael	mpl@gps.caltech.edu	Collaborative Research: NNA Research: Developing capacity for planning and adapting to riverbank erosion and its consequences in the Yukon River Basin	2127442
Anaktuvuk Pass	Ward Jones, Melissa	mkwardjones@alaska.edu	NNA Research: Permafrost Grown: Cultivating convergence between farmers and researchers to foster sustainability for intensifying permafrost-agroecosystems	2126965
Anchorage	Saleh, Navid	navid.saleh@utexas.edu	NNA Track 1: Collaborative Research: A Purpose-Driven Merger of Western Science and Indigenous Knowledge of Water Quality in Alaskan Communities	2022670
Anchorage	Schmidt, Jennifer	jischmidt0@gmail.com	NNA Research: Collaborative Research: Socio-ecological considerations for sustainAble Fuel treatments to Reduce wildfire Risk (SAFRR)	2127283
Arctic Village	Jones, Tyler	tyler.jones@colorado.edu	Collaborative Research: NNA Track 1: Global impacts and social implications of changing thermokarst lake environments near Yukon River Watershed communities	2022561
Atkasuk	Shiklomanov, Nikolay	shiklom@gwu.edu	NNA: Collaborative Research: The Circumpolar Active Layer Monitoring Network-CALM V (2019-2024): Long-term Observations on the Climate-Active Layer-Permafrost System	1836377
Batsfjord	Ivanov, Valeriy	ivanov@umich.edu	Collaborative Research: NNA Research: Interactions of natural and social systems with climate change, globalization, and infrastructure development in the Arctic	2126792
Beaver Creek	Musselman, Keith	keith.musselman@colorado.edu	NNA Track 1: Collaborative Research: The climate impacts on Alaskan and Yukon rivers, fish, and communities as told through co-produced scenarios	1928189
Bethel	Spearing, Lauryn	spearing@uic.edu	NNA Research: Collaborative Research: Infrastructure Interdependencies in the Arctic: Reframing the Urban-Rural Interface	2318216
Carmacks	Musselman, Keith	keith.musselman@colorado.edu	NNA Track 1: Collaborative Research: The climate impacts on Alaskan and Yukon rivers, fish, and communities as told through co-produced scenarios	1928189
Dawson	Musselman, Keith	keith.musselman@colorado.edu	NNA Track 1: Collaborative Research: The climate impacts on Alaskan and Yukon rivers, fish, and communities as told through co-produced scenarios	1928189
Delta Junction	Ward Jones, Melissa	mkwardjones@alaska.edu	NNA Research: Permafrost Grown: Cultivating convergence between farmers and researchers to foster sustainability for intensifying permafrost-agroecosystems	2126965
Eagle	Musselman, Keith	keith.musselman@colorado.edu	NNA Track 1: Collaborative Research: The climate impacts on Alaskan and Yukon rivers, fish, and communities as told through co-produced scenarios	1928189
Fairbanks	Musselman, Keith	keith.musselman@colorado.edu	NNA Track 1: Collaborative Research: The climate impacts on Alaskan and Yukon rivers, fish, and communities as told through co-produced scenarios	1928189
Fairbanks	Ward Jones, Melissa	mkwardjones@alaska.edu	NNA Research: Permafrost Grown: Cultivating convergence between farmers and researchers to foster sustainability for intensifying permafrost-agroecosystems	2126965
Fairbanks	Shiklomanov, Nikolay	shiklom@gwu.edu	NNA: Collaborative Research: The Circumpolar Active Layer Monitoring Network-CALM V (2019-2024): Long-term Observations on the Climate-Active Layer-Permafrost System	1836377
Fort Yukon	Jones, Tyler	tyler.jones@colorado.edu	Collaborative Research: NNA Track 1: Global impacts and social implications of changing thermokarst lake environments near Yukon River Watershed communities	2022561
Fort Yukon	Musselman, Keith	keith.musselman@colorado.edu	NNA Track 1: Collaborative Research: The climate impacts on Alaskan and Yukon rivers, fish, and communities as told through co-produced scenarios	1928189
Galena	Musselman, Keith	keith.musselman@colorado.edu	NNA Track 1: Collaborative Research: The climate impacts on Alaskan and Yukon rivers, fish, and communities as told through co-produced scenarios	1928189
Goldstream Valley	Jones, Tyler	tyler.jones@colorado.edu	Collaborative Research: NNA Track 1: Global impacts and social implications of changing thermokarst lake environments near Yukon River Watershed communities	2022561
Hess Creek	Musselman, Keith	keith.musselman@colorado.edu	NNA Track 1: Collaborative Research: The climate impacts on Alaskan and Yukon rivers, fish, and communities as told through co-produced scenarios	1928189
Inglefield Land	Straneo, Fiammetta	fstraneo@whoi.edu	Collaborative Research: NNA Research: Global changes, local impacts: Study of glacial fjords, ecosystems and communities in Greenland	2127241
Ivotuk	Shiklomanov, Nikolay	shiklom@gwu.edu	NNA: Collaborative Research: The Circumpolar Active Layer Monitoring Network-CALM V (2019-2024): Long-term Observations on the Climate-Active Layer-Permafrost System	1836377
Kangerlussuaq	Straneo, Fiammetta	fstraneo@whoi.edu	Collaborative Research: NNA Research: Global changes, local impacts: Study of glacial fjords, ecosystems and communities in Greenland	2127241
Kangerlussuaq	Willis, Michael	mikewillis@vt.edu	NNA Research: The Greenland Hazards Project	2304291
Kenai Peninsula	Schmidt, Jennifer	jischmidt0@gmail.com	NNA Research: Collaborative Research: Socio-ecological considerations for sustainAble Fuel treatments to Reduce wildfire Risk (SAFRR)	2127283
Kongiganak	Brigham-Grette, Julie	jbg92@umass.edu	NNA Research: Collaborative Research: Meq unguvatkarput (water is our livelihood) - building community resilience for the future	2220559
Kotzebue	Pride, Dominique	djpride@alaska.edu	NNA Research: Reducing Fuel Oil Consumption in Rural Arctic Communities	2220615
Koyukuk	Musselman, Keith	keith.musselman@colorado.edu	NNA Track 1: Collaborative Research: The climate impacts on Alaskan and Yukon rivers, fish, and communities as told through co-produced scenarios	1928189
Mayo	Musselman, Keith	keith.musselman@colorado.edu	NNA Track 1: Collaborative Research: The climate impacts on Alaskan and Yukon rivers, fish, and communities as told through co-produced scenarios	1928189
McGrath	Shiklomanov, Alexander	alex.shiklomanov@unh.edu	NNA Research: Collaborative Research: Socio-Ecological Systems Transformation in River basins of the sub-Arctic under climate change (SESTRA)	2318380
Mekoryuk	Brigham-Grette, Julie	jbg92@umass.edu	NNA Research: Collaborative Research: Meq unguvatkarput (water is our livelihood) - building community resilience for the future	2220559
Minto	Jones, Tyler	tyler.jones@colorado.edu	Collaborative Research: NNA Track 1: Global impacts and social implications of changing thermokarst lake environments near Yukon River Watershed communities	2022561
Nome	Shiklomanov, Nikolay	shiklom@gwu.edu	NNA: Collaborative Research: The Circumpolar Active Layer Monitoring Network-CALM V (2019-2024): Long-term Observations on the Climate-Active Layer-Permafrost System	1836377
Nome	Spearing, Lauryn	spearing@uic.edu	NNA Research: Collaborative Research: Infrastructure Interdependencies in the Arctic: Reframing the Urban-Rural Interface	2318216
Nuuk	Willis, Michael	mikewillis@vt.edu	NNA Research: The Greenland Hazards Project	2304291
Nuuk	Straneo, Fiammetta	fstraneo@whoi.edu	Collaborative Research: NNA Research: Global changes, local impacts: Study of glacial fjords, ecosystems and communities in Greenland	2127241
Pilot Station	Musselman, Keith	keith.musselman@colorado.edu	NNA Track 1: Collaborative Research: The climate impacts on Alaskan and Yukon rivers, fish, and communities as told through co-produced scenarios	1928189
Pituffik Space Base (Thule)	Albert, Mary	Mary.R.Albert@dartmouth.edu	NNA Track 1: Energy, Environment, and Empowerment in Northern Greenland	1927845
Prudhoe Bay	Shiklomanov, Nikolay	shiklom@gwu.edu	NNA: Collaborative Research: The Circumpolar Active Layer Monitoring Network-CALM V (2019-2024): Long-term Observations on the Climate-Active Layer-Permafrost System	1836377
Qaanaaq	Albert, Mary	Mary.R.Albert@dartmouth.edu	NNA Track 1: Energy, Environment, and Empowerment in Northern Greenland	1927845
Saint Marys	Musselman, Keith	keith.musselman@colorado.edu	NNA Track 1: Collaborative Research: The climate impacts on Alaskan and Yukon rivers, fish, and communities as told through co-produced scenarios	1928189
Sand Point	West, Catherine	cwest@bu.edu	NNA Incubator: Collaborative Research: Historical Ecology of the Pacific Cod Fishery	2220552
Selawik	Saleh, Navid	navid.saleh@utexas.edu	NNA Track 1: Collaborative Research: A Purpose-Driven Merger of Western Science and Indigenous Knowledge of Water Quality in Alaskan Communities	2022670
Tanana	Jones, Tyler	tyler.jones@colorado.edu	Collaborative Research: NNA Track 1: Global impacts and social implications of changing thermokarst lake environments near Yukon River Watershed communities	2022561
Tanana	Musselman, Keith	keith.musselman@colorado.edu	NNA Track 1: Collaborative Research: The climate impacts on Alaskan and Yukon rivers, fish, and communities as told through co-produced scenarios	1928189
Teslin	Musselman, Keith	keith.musselman@colorado.edu	NNA Track 1: Collaborative Research: The climate impacts on Alaskan and Yukon rivers, fish, and communities as told through co-produced scenarios	1928189
Tok	Musselman, Keith	keith.musselman@colorado.edu	NNA Track 1: Collaborative Research: The climate impacts on Alaskan and Yukon rivers, fish, and communities as told through co-produced scenarios	1928189
Toolik	Shiklomanov, Nikolay	shiklom@gwu.edu	NNA: Collaborative Research: The Circumpolar Active Layer Monitoring Network-CALM V (2019-2024): Long-term Observations on the Climate-Active Layer-Permafrost System	1836377
Upernavik	Straneo, Fiammetta	fstraneo@whoi.edu	Collaborative Research: NNA Research: Global changes, local impacts: Study of glacial fjords, ecosystems and communities in Greenland	2127241
Utqiagvik (Barrow)	Shiklomanov, Nikolay	shiklom@gwu.edu	NNA: Collaborative Research: The Circumpolar Active Layer Monitoring Network-CALM V (2019-2024): Long-term Observations on the Climate-Active Layer-Permafrost System	1836377
Utqiagvik (Barrow)	Epstein, Howard	hee2b@virginia.edu	NNA Track 1: Understanding the Changing Natural-Built Landscape in an Arctic Community: An integrated sensor network in Utqiagvik, Alaska	2022639
Utqiagvik (Barrow)	York, Abigail	abigail.york@asu.edu	NNA Track 1: Collaborative Research: Opening Up and Crowding In: Dynamic Adaptation to Evolving Arctic Sea Ice Loss	1928235
Utqiagvik (Barrow)	Spearing, Lauryn	spearing@uic.edu	NNA Research: Collaborative Research: Infrastructure Interdependencies in the Arctic: Reframing the Urban-Rural Interface	2318216
Utechtic	Musselman, Keith	keith.musselman@colorado.edu	NNA Track 1: Collaborative Research: The climate impacts on Alaskan and Yukon rivers, fish, and communities as told through co-produced scenarios	1928189

Venette	Musselman, Keith	keith.musselman@colorado.edu	NNA Track 1: Collaborative Research: The climate impacts on Alaskan and Yukon rivers, fish, and communities as told through co-produced scenarios	1928189
Whitehorse	Musselman, Keith	keith.musselman@colorado.edu	NNA Track 1: Collaborative Research: The climate impacts on Alaskan and Yukon rivers, fish, and communities as told through co-produced scenarios	1928189
Whitehorse	Schmidt, Jennifer	jschmidt0@gmail.com	NNA Research: Collaborative Research: Socio-ecological considerations for sustainAble Fuel treatments to Reduce wildfire Risk (SAFRR)	2127283